

**RENZ**



EN

# WALLBOX POWER2CAR



POWER2CAR  
**RIM**



POWER2CAR  
**STEEL**

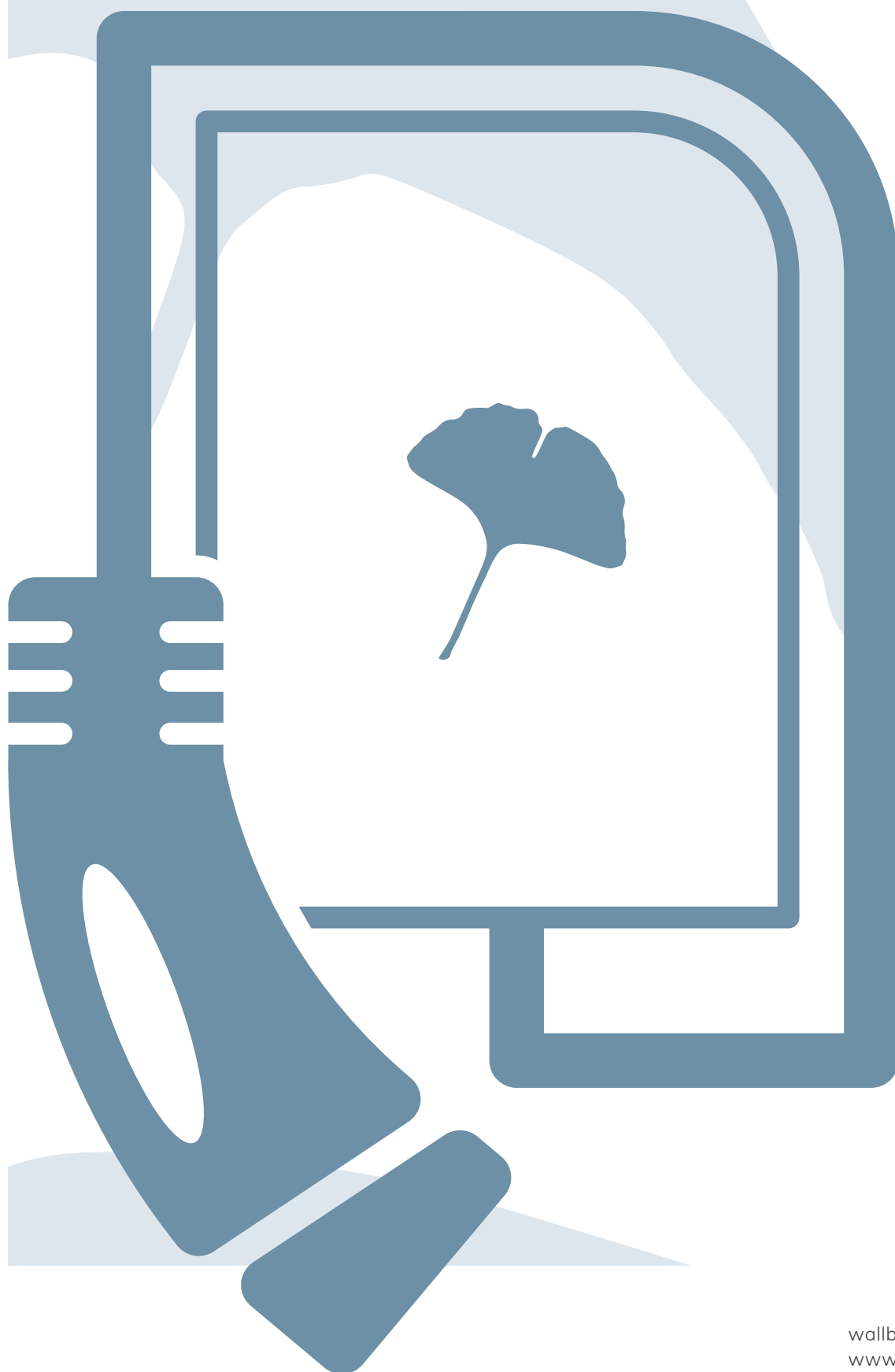


POWER2CAR  
**FUEL**



POWER2CAR  
**ACCESSORIES**

WALLBOX  
**POWER2CAR**



## CHR. RENZ GMBH

Rechbergstr. 44  
73540 Heubach

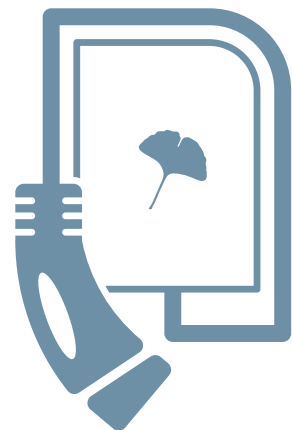
T: +49 7173 186 0  
F: +49 7173 186 86

[www.renz.com](http://www.renz.com)  
[mail@renz.com](mailto:mail@renz.com)

## ORDERS

T: +49 7173 186 9980  
F: +49 7173 186 86

[wallbox@renz.com](mailto:wallbox@renz.com)  
[www.renzwallbox.com](http://www.renzwallbox.com)



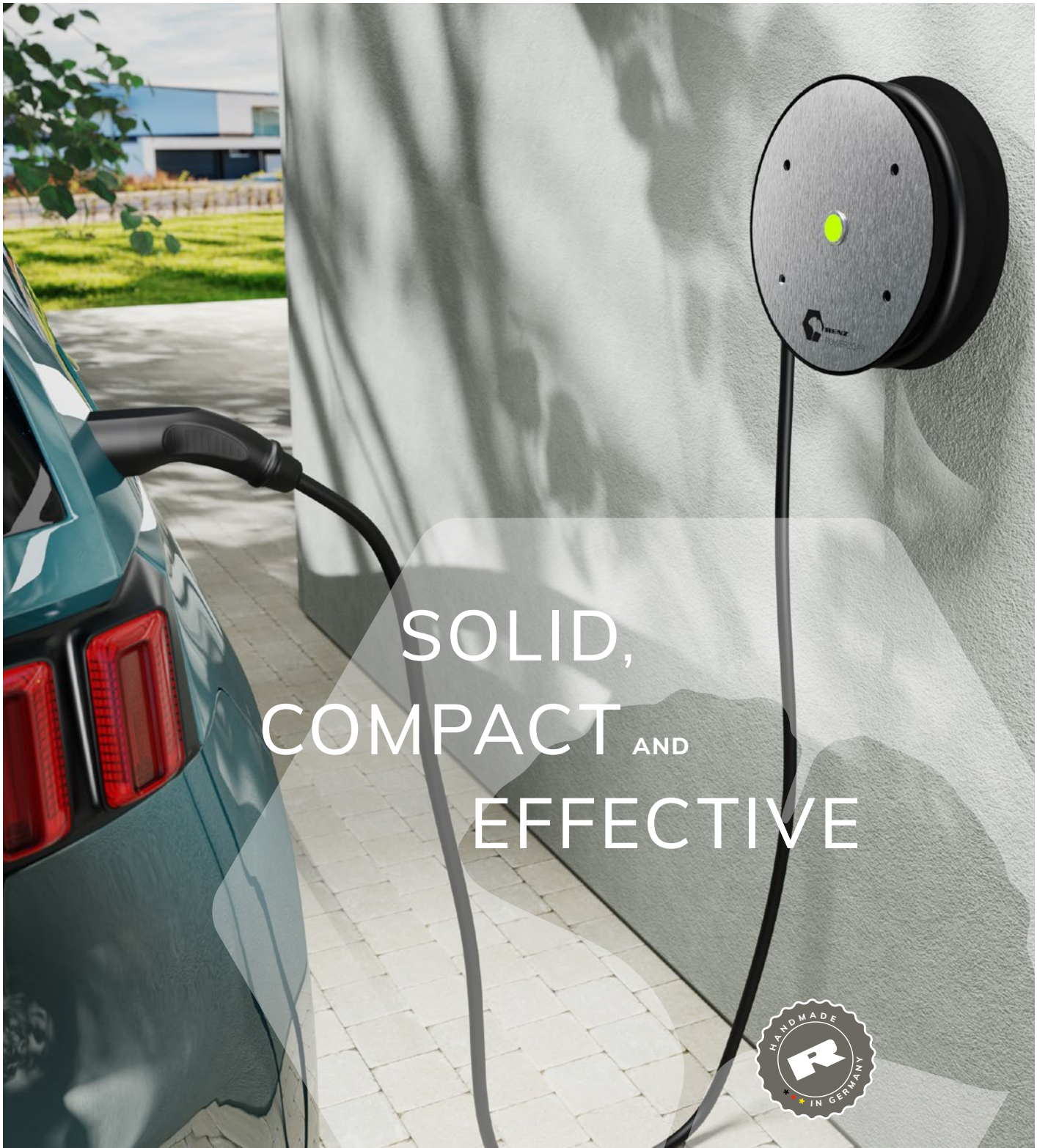
WALLBOX  
**POWER2CAR**

[wallbox@renz.com](mailto:wallbox@renz.com)  
[www.renzwallbox.com](http://www.renzwallbox.com)



**RENZ**

# WALLBOX POWER2CAR RIM



SOLID,  
COMPACT AND  
EFFECTIVE





## POWER2CAR RIM

You have decided in favour of e-mobility? You are now looking for a stable charging station for your electric vehicle? You want it to be compact, effective and safe? It should meet your requirements in terms of charging technology at the highest level and quality made in Germany? Then our POWER2CAR-RIM wallbox will convince you.

With this wallbox in the shape of a rim, you can roll up the cable conveniently and neatly. The car battery is charged gently and effectively. Thanks to the sturdy housing with a stainless steel front makes it suitable for both indoor and outdoor areas, without the need for an additional cover.

Our charging station guarantees you future-proof technology. We will be happy to support professional installation and offer you a comprehensive service.



The POWER2CAR-RIM ensures effective and gentle charging of your car battery. It is easy to operate and suitable for all private and commercial applications.



### POWER2CAR - RIM

11 kW, Typ 2 charging cable (7 m), IP54

Art. No. 4798001030

### POWER2CAR - RIM | RFID

11 kW, RFID, Typ 2 charging cable (7 m),  
3 Transponder, IP54

Art. No. 4798001031



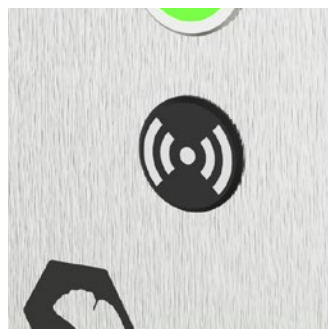
RFID





The bright LED always shows you the current status of the charging system in different colours.

Thanks to the integrated DC residual current detection, you can do without an expensive universal current-sensitive RCD in the building distribution system.



The POWER2CAR - RIM | RFID enables you to release the charge with the enclosed RFID transponders (3 pieces).

As soon as your electric vehicle is connected to the wallbox via the charging cable, you hold your transponder in front of the RFID reader on the wallbox and you're ready to go.

## RIM TOWER BASE



**RIM TOWER - BASE**  
Stainless steel (brushed)  
Mounting material  
**Art. No. 4798001082**



- » 3.7-11 kW charging power (max. 16A)
- » DC residual current detection
- » Type 2 charging cable (7 m)
- » sturdy housing with stainless steel front
- » for private and commercial use
- » suitable for indoor and outdoor installation (IP 54)
- » easy to operate
- » craftsman-friendly design for convenient installation
- » handmade in Germany
- » in the RFID version: charge release through RFID technology

## POWER2CAR - RIM

Art.No.	4798001030
Electrical Output:	3,7 - 11 kW (max. 16 A) DC residual current detection
Plug type:	Typ 2 (Vehicles in Europe) Loading mode 3, IEC 62196
Loading cable:	7 m
Electrical connection:	3 Ph, 400 V, 50/60 Hz, 16 A
Ambient temperature:	-30°C - 50°C
Protection class:	IP54
Housing:	Metal housing with stainless steel front
Size (W/H/D):	290 x 290 x 120 mm
Weight:	8,5 kg

## POWER2CAR - RIM | RFID

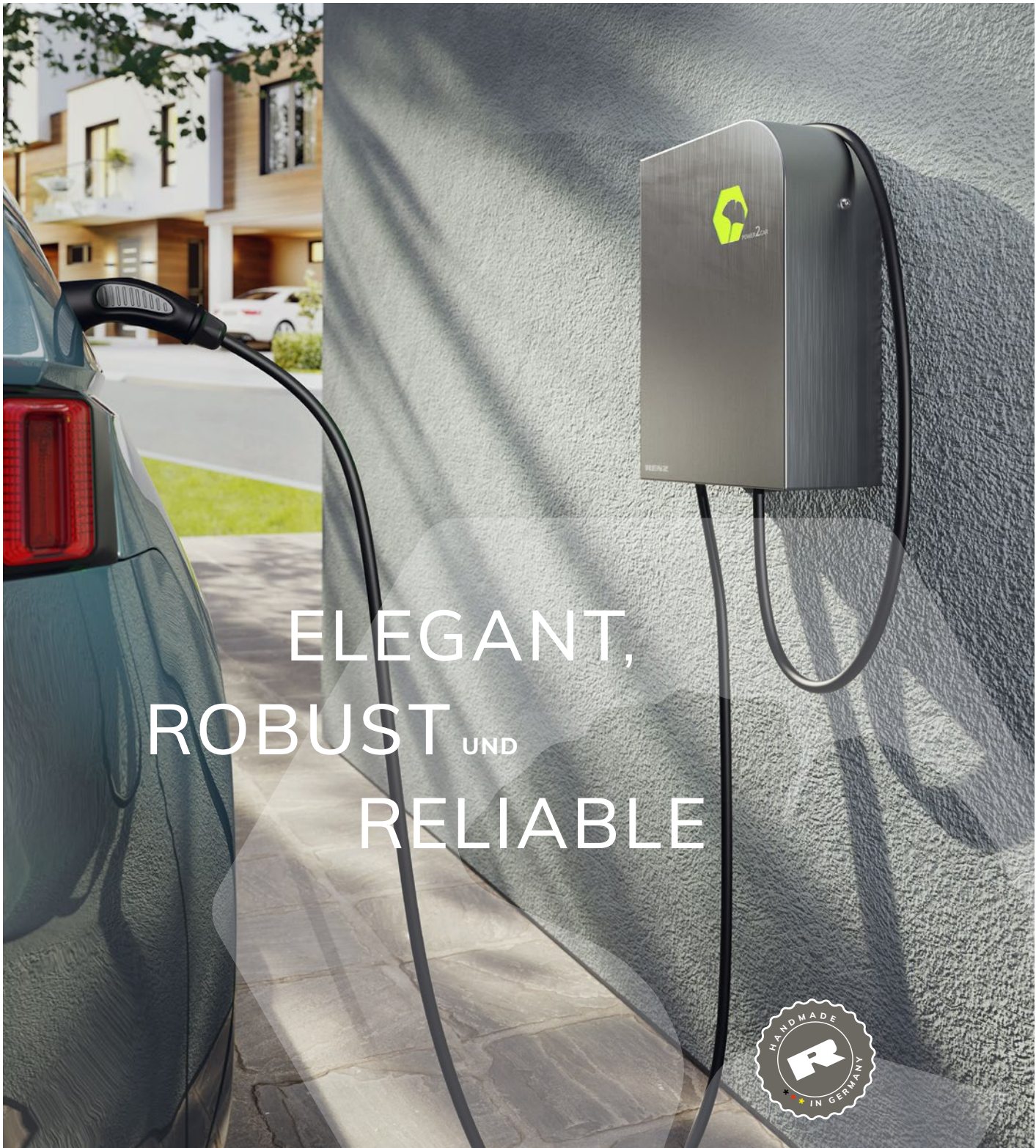
Art.No.	4798001031
Electrical Output:	3,7 - 11 kW (max. 16 A) DC residual current detection
Access protection:	RFID (incl. 3 RFID-Transponder)
Plug type:	Typ 2 (Vehicles in Europe) Lademode 3, IEC 62196
Loading cable:	7 m
Electrical connection:	3 Ph, 400 V, 50/60 Hz, 16 A
Ambient temperature:	-30°C - 50°C
Protection class:	IP54
Housing:	Metal housing with stainless steel front
Size (W/H/D):	290 x 290 x 120 mm
Weight:	8,5 kg





**RENZ**

# WALLBOX POWER2CAR **STEEL**



ELEGANT,  
ROBUST UND  
RELIABLE





# POWER2CAR STEEL

You have decided in favour of e-mobility? You are now looking for an excellent charging station for your electric vehicle? Do you attach importance to reliable, fast and safe charging technology with the highest quality standards, developed and manufactured in Germany?

Then our POWER2CAR - STEEL wallbox with its elegant and timeless design will convince you!

The brushed and corrosion-resistant stainless steel housing is not only elegant to look at, it also defies all weather conditions and is therefore extremely robust and durable.

Our charging station guarantees you future-proof technology. We will be happy to support professional installation and offer you a comprehensive service.



With the POWER2CAR - STEEL an optimal and gentle charging of your car battery is assured. It is easy to operate and is suitable for all private and commercial applications.

## POWER2CAR - STEEL

11 kW, Typ 2 charging cable (5 m), IP65

Art. No. 4798001000

## POWER2CAR - STEEL | RFID

11 kW, RFID, Typ 2 charging cable (7 m) with integrated RFID-Leser, 3 RFID Transponder, IP65

Art. No. 4798001002



RFID

## POWER2CAR - IQ

(Coming soon)

22 / 11 kW, RFID, WLAN, APP, meter, Load management, Typ 2 charging cable (7 m) with integrated RFID-Sensor, 3 RFID Transponder, IP65

Art. No. 4798001003



RFID



WLAN



APP







The bright LED always shows you the current status of the charging system in different colours.

Thanks to the integrated DC residual current detection, you can do without an expensive universal current-sensitive RCD in the building distribution system.



The RFID and IQ versions enable you to release the charge with the enclosed RFID transponders (3 pieces) directly on the charging plug.

As soon as your electric vehicle is connected to the wallbox via the charging cable, hold your transponder in front of the RFID reader. The release is issued and you're ready to go.

## STEEL TOWER BASE



**STEEL TOWER | BASE**  
Stainless steel (brushed),  
incl. cable holder  
PREMIUM HOOK,  
Mounting material  
Art. No. 4798001080

## WALLBOX CABLE HOLDER



### HOOK

Steel, powder coated,  
anthracite, for wall mounting,  
incl. mounting material  
Art.No. 4798001105



### PREMIUM HOOK

Stainless steel, brushed,  
silver, mounting on wall  
or stand possible,  
incl. mounting material  
Art.No. 4798001110

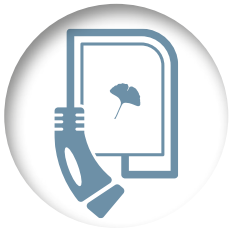
- » 3.7-11 kW charging power (max. 16A)
- » DC residual current detection
- » Type 2 charging cable (5 m or 7 m)
- » Weatherproof stainless steel housing for private and commercial use
- » Suitable for indoor and outdoor installation
- » easy to operate
- » craftsman-friendly design for convenient installation
- » handmade in Germany
- » matching stand (optional) available
- » in the version RFID as well as IQ: charge release through RFID technology

## POWER2CAR - STEEL

Art.No.	4798001000
Electrical Output:	3,7 - 11 kW (max. 16 A) DC residual current detection
Plug type:	Typ 2 (Vehicles in Europe) Loading mode 3, IEC 62196
Loading cable:	5 m
Electrical connection:	3 Ph, 400 V, 50/60 Hz, 16 A
Ambient temperature:	-30°C – 50°C
Protection class::	IP65
Housing:	Stainless steel
Size (W/H/D):	300 x 400 x 130 mm

## POWER2CAR - STEEL | RFID

Art.No.	4798001002
Electrical Output:	3,7 - 11 kW (max. 16 A) DC residual current detection
Access protection:	RFID (Inclusive 3 RFID-Transponder)
Plug type:	Typ 2 (Vehicles in Europe) Lademode 3, IEC 62196, integrierter RFID-Sensor
Loading cable:	7 m
Electrical connection:	3 Ph, 400 V, 50/60 Hz, 16 A
Ambient temperature:	-30°C – 50°C
Protection class:	IP65
Housing:	Stainless steel
Size (W/H/D):	300 x 400 x 130 mm



**RENZ**

# WALLBOX POWER2CAR **FUEL**



THE SPIRIT OF THE PAST  
THE TECHNOLOGY  
OF THE FUTURE



[www.renzwallbox.com](http://www.renzwallbox.com)  
[wallbox@renz.com](mailto:wallbox@renz.com)





## POWER2CAR - FUEL

You have decided in favor of e-mobility? You are now looking for a suitable charging station for your electric vehicle? It should be special, charges fast and safely and at the same time looks really good? Then our POWER2CAR FUEL wallbox will convince you!

With the POWER2CAR FUEL, you combine the spirit of the past with the technology of the future! The robust, durable and above all unique charging station is individually produced in our manufactory. It guarantees you a future-proof technology: developed and manufactured in Germany.

We will be happy to support professional installation and offer you a comprehensive service.



The POWER2CAR-FUEL ensures an optimal and gentle charging of your car battery. It is easy to operate and suitable for all private and commercial applications.

### POWER2CAR - FUEL

11 kW, Typ 2 charging cable (5 m)

Art. No. 4798001020

OLIVE

### POWER2CAR - FUEL | RFID

11 kW, Typ 2 charging cable (7 m) with integrated RFID-Sensor, 3 RFID Transponder

Art. No. 4798001025



RFID



### POWER2CAR - FUEL

11 kW, Typ 2 Ladekabel (5 m)

Art. No. 4798001021

PITCH BLACK

### POWER2CAR - FUEL | RFID

11 kW, Typ 2 charging cable (7 m) with integrated RFID-Sensor, 3 RFID Transponder

Art. No. 4798001026



RFID



### POWER2CAR - FUEL | RFID

11 kW, Typ 2 charging cable (7 m) with integrated RFID-Sensor, 3 RFID Transponder

Art. No. 4798001022

PLATIN



RFID



DELUXE

AMBER

### POWER2CAR - FUEL | RFID

11 kW, Typ 2 charging cable (7 m) with integrated RFID-Sensor, 3 RFID Transponder

Art. No. 4798001023



RFID





The integrated bright multi-color LED always shows you the current status of the charging system.



The RFID versions enable you to release the charge with the enclosed RFID transponders (3 pieces) directly on the charging plug.

As soon as your electric vehicle is connected to the wallbox via the charging cable, hold your transponder in front of the RFID reader. The release is issued and you're ready to go.

- » 3.7-11 kW charging power (max. 16A)
- » DC residual current detection
- » Type 2 charging cable (5 m or 7 m)
- » Retro design steel case
- » Suitable for indoor and outdoor installation\*
- » easy to operate
- » craftsman-friendly design for convenient installation
- » handmade in Germany
- » in the version RFID:  
charge release through RFID technology

\*Mount in a rain-protected place outdoors.

## WALLBOX CABLE HOLDER



### HOOK

Steel, powder coated, anthracite, for wall mounting, incl. mounting material  
Art.No. 4798001105



### PREMIUM HOOK

Stainless steel, brushed, silver, mounting on wall or stand possible, incl. mounting material  
Art.No. 4798001110

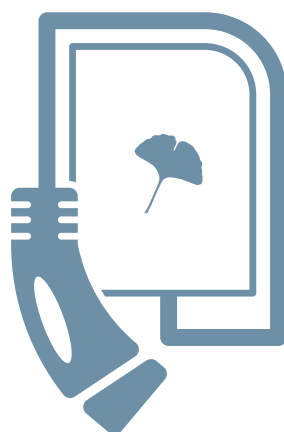


## POWER2CAR FUEL

Art.No.	olive 4798001020 pitch black 4798001021
Electrical Output:	3,7 - 11 kW (max. 16 A) DC residual current detection
Plug type:	Typ 2 (Vehicles in Europe) Lademode 3, IEC 62196
Loading cable:	5 m
Electrical connection:	3 Ph, 400 V, 50/60 Hz, 16 A
Ambient temperature:	-30°C – 50°C
Housing:	Stahl (pulverbeschichtet)
Size (W/H/D):	345 x 468 x 220 mm

## POWER2CAR FUEL | RFID

Art.No.	olive 4798001025 pitch black 4798001026 platin 4798001022 amber 4798001023
Electrical Output:	3,7 - 11 kW (max. 16 A) DC residual current detection
Access protection:	RFID (Inclusive 3 RFID-Transponder)
Plug type:	Typ 2 (Vehicles in Europe) Lademode 3, IEC 62196, integrated RFID-Sensor
Loading cable:	7 m
Electrical connection:	3 Ph, 400 V, 50/60 Hz, 16 A
Ambient temperature:	-30°C – 50°C
Housing:	Stahl (pulverbeschichtet)
Size (W/H/D):	345 x 468 x 220 mm



## CHR. RENZ GMBH

Rechbergstr. 44  
73540 Heubach

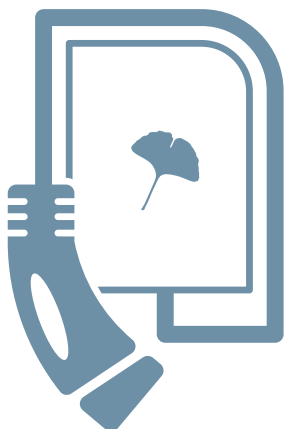
T: +49 7173 186 0  
F: +49 7173 186 86

[www.renz.com](http://www.renz.com)  
[mail@renz.com](mailto:mail@renz.com)

## ORDERS

T: +49 7173 186 9980  
F: +49 7173 186 86

[www.renzwallbox.com](http://www.renzwallbox.com)  
[wallbox@renz.com](mailto:wallbox@renz.com)



WALLBOX  
**POWER2CAR**